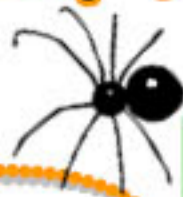




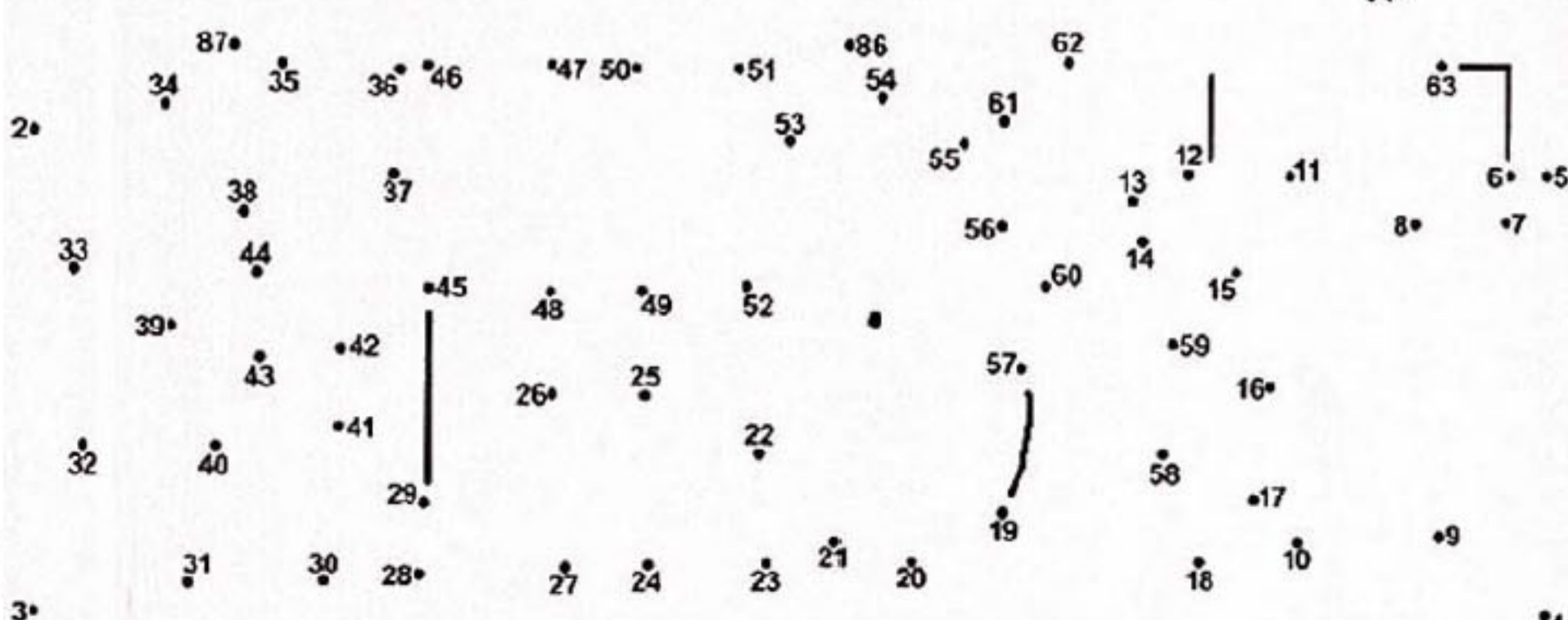
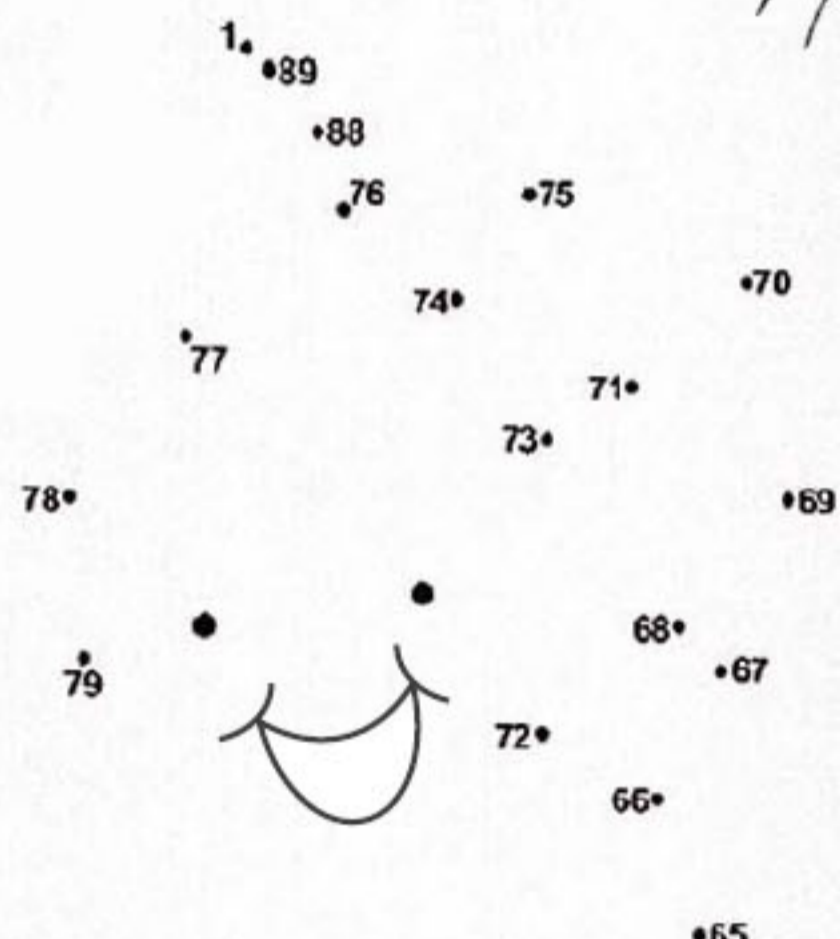
In the dark ...



Who is in the dark box?

Connect the dots from one to eighty – nine and see how this traditional rhyme ends.

In a dark, dark house
 there's a dark, dark room.
 In the dark, dark room
 there's a dark, dark cupboard.
 In the dark, dark cupboard
 there's a dark, dark shelf.
 On the dark, dark shelf
 there's a dark, dark box.
 And in the dark, dark box
 there's a dark, dark...



BOO!

I'm a ghost!

